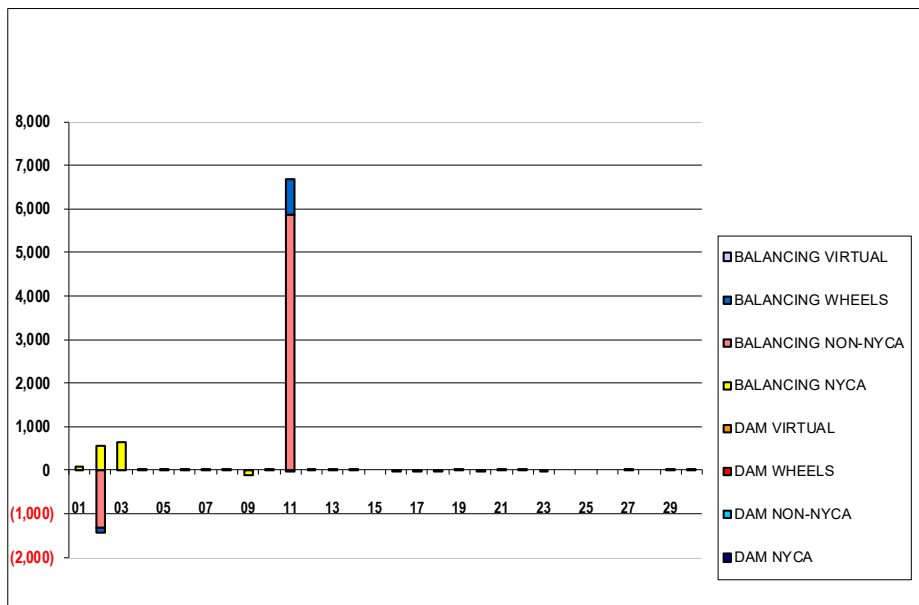


SETTLEMENTS REPORT
 June 2023 Settlement Adjustment
 July 10, 2023

Initial – Market Supply Delta Analysis

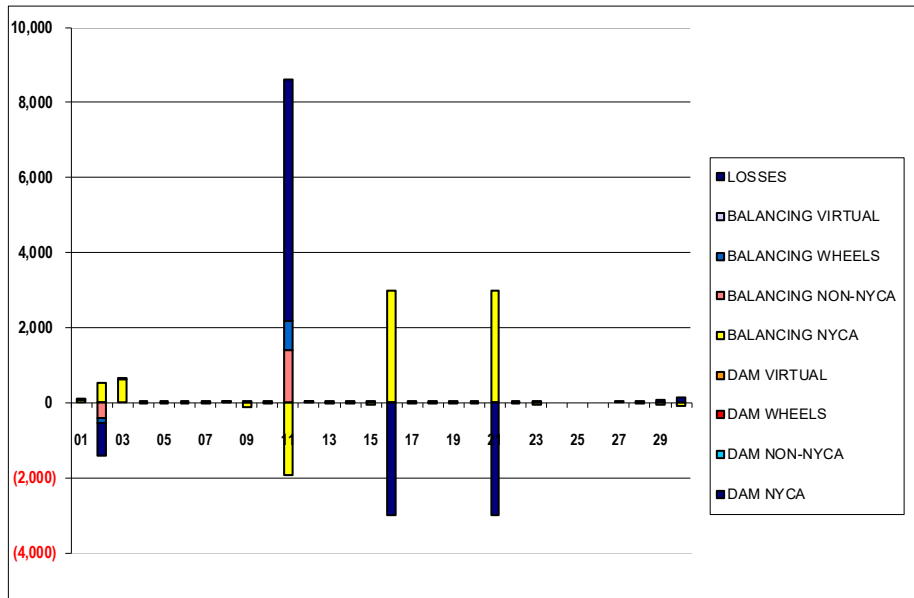
| | MONDAY | TUESDAY | WEDNESDAY | THURSDAY | FRIDAY | SATURDAY | SUNDAY |
|--------------------|--------|---------|-----------|----------|---------|----------|--------|
| | | | | 1 | 2 | 3 | 4 |
| DAM NYCA | | | | 0 | 0 | 0 | 0 |
| DAM NON-NYCA | | | | 0 | 0 | 0 | 0 |
| DAM WHEELS | | | | 0 | 0 | 0 | 0 |
| DAM VIRTUAL | | | | 0 | 0 | 0 | 0 |
| BALANCING NYCA | | | | 87 | 548 | 637 | 5 |
| BALANCING NON-NYCA | | | | 0 | (1,326) | 0 | 0 |
| BALANCING WHEELS | | | | 0 | (125) | 0 | 0 |
| BALANCING VIRTUAL | | | | 0 | 0 | 0 | 0 |
| | 5 | 6 | 7 | 8 | 9 | 10 | 11 |
| DAM NYCA | 0 | 0 | 0 | 0 | 0 | 0 | 0 |
| DAM NON-NYCA | 0 | 0 | 0 | 0 | 0 | 0 | 0 |
| DAM WHEELS | 0 | 0 | 0 | 0 | 0 | 0 | 0 |
| DAM VIRTUAL | 0 | 0 | 0 | 0 | 0 | 0 | 0 |
| BALANCING NYCA | 4 | 6 | 6 | 6 | (113) | 6 | (1) |
| BALANCING NON-NYCA | 0 | 0 | 0 | 0 | 0 | 0 | 5,866 |
| BALANCING WHEELS | 0 | 0 | 0 | 0 | 0 | 0 | 801 |
| BALANCING VIRTUAL | 0 | 0 | 0 | 0 | 0 | 0 | 0 |
| | 12 | 13 | 14 | 15 | 16 | 17 | 18 |
| DAM NYCA | 0 | 0 | 0 | 0 | 0 | 0 | 0 |
| DAM NON-NYCA | 0 | 0 | 0 | 0 | 0 | 0 | 0 |
| DAM WHEELS | 0 | 0 | 0 | 0 | 0 | 0 | 0 |
| DAM VIRTUAL | 0 | 0 | 0 | 0 | 0 | 0 | 0 |
| BALANCING NYCA | 10 | 1 | 0 | 0 | (32) | (0) | (0) |
| BALANCING NON-NYCA | 0 | 0 | 0 | 0 | 0 | 0 | 0 |
| BALANCING WHEELS | 0 | 0 | 0 | 0 | 0 | 0 | 0 |
| BALANCING VIRTUAL | 0 | 0 | 0 | 0 | 0 | 0 | 0 |
| | 19 | 20 | 21 | 22 | 23 | 24 | 25 |
| DAM NYCA | 0 | 0 | 0 | 0 | 0 | 0 | 0 |
| DAM NON-NYCA | 0 | 0 | 0 | 0 | 0 | 0 | 0 |
| DAM WHEELS | 0 | 0 | 0 | 0 | 0 | 0 | 0 |
| DAM VIRTUAL | 0 | 0 | 0 | 0 | 0 | 0 | 0 |
| BALANCING NYCA | 10 | (1) | 4 | 3 | (41) | 0 | 0 |
| BALANCING NON-NYCA | 0 | 0 | 0 | 0 | 0 | 0 | 0 |
| BALANCING WHEELS | 0 | 0 | 0 | 0 | 0 | 0 | 0 |
| BALANCING VIRTUAL | 0 | 0 | 0 | 0 | 0 | 0 | 0 |
| | 26 | 27 | 28 | 29 | 30 | | |
| DAM NYCA | 0 | 0 | 0 | 0 | 0 | | |
| DAM NON-NYCA | 0 | 0 | 0 | 0 | 0 | | |
| DAM WHEELS | 0 | 0 | 0 | 0 | 0 | | |
| DAM VIRTUAL | 0 | 0 | 0 | 0 | 0 | | |
| BALANCING NYCA | 0 | 3 | 0 | 3 | 29 | | |
| BALANCING NON-NYCA | 0 | 0 | 0 | 0 | 0 | | |
| BALANCING WHEELS | 0 | 0 | 0 | 0 | 0 | | |
| BALANCING VIRTUAL | 0 | 0 | 0 | 0 | 0 | | |



SETTLEMENTS REPORT
 June 2023 Settlement Adjustment
 July 10, 2023

Initial – Market Withdrawals Delta Analysis

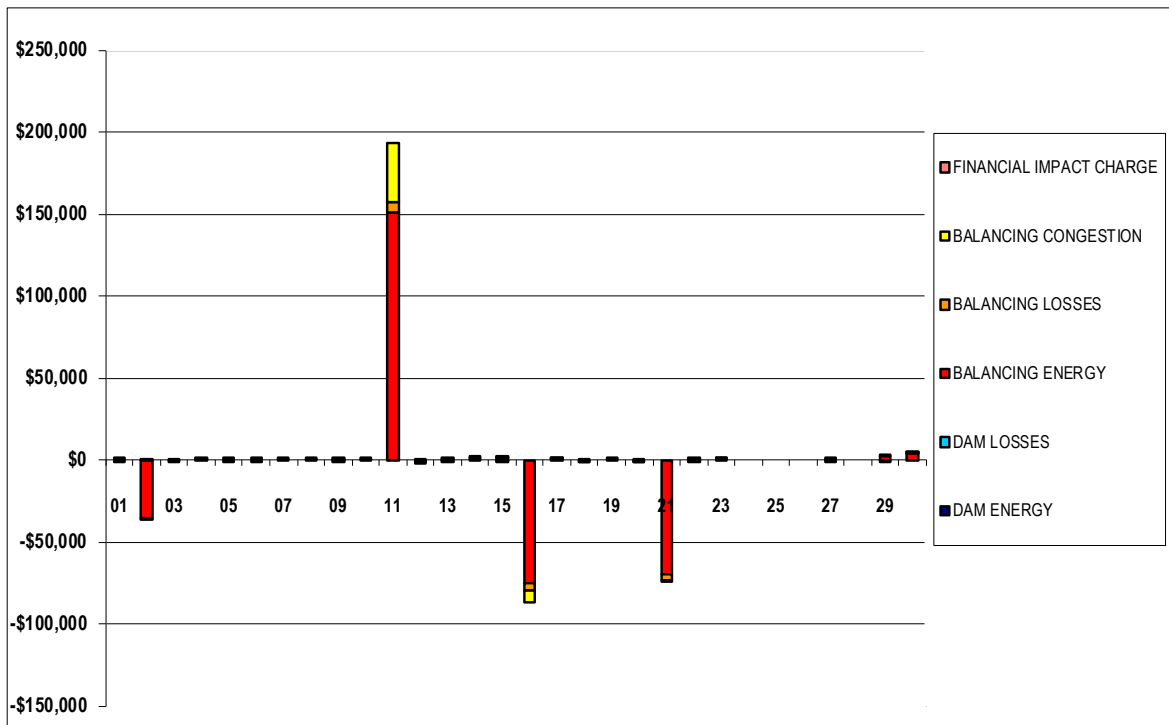
| | MONDAY | TUESDAY | WEDNESDAY | THURSDAY | FRIDAY | SATURDAY | SUNDAY |
|--------------------|--------|---------|-----------|----------|---------|----------|---------|
| | | | | 1 | 2 | 3 | 4 |
| DAM NYCA | | | | 0 | 0 | 0 | 0 |
| DAM NON-NYCA | | | | 0 | 0 | 0 | 0 |
| DAM WHEELS | | | | 0 | 0 | 0 | 0 |
| DAM VIRTUAL | | | | 0 | 0 | 0 | 0 |
| BALANCING NYCA | | | | 79 | 524 | 624 | (4) |
| BALANCING NON-NYCA | | | | 0 | (404) | 0 | 0 |
| BALANCING WHEELS | | | | 0 | (125) | 0 | 0 |
| BALANCING VIRTUAL | | | | 0 | 0 | 0 | 0 |
| UFE/LOSSES | | | | 8 | (898) | 13 | 9 |
| | 5 | 6 | 7 | 8 | 9 | 10 | 11 |
| DAM NYCA | 0 | 0 | 0 | 0 | 0 | 0 | 0 |
| DAM NON-NYCA | 0 | 0 | 0 | 0 | 0 | 0 | 0 |
| DAM WHEELS | 0 | 0 | 0 | 0 | 0 | 0 | 0 |
| DAM VIRTUAL | 0 | 0 | 0 | 0 | 0 | 0 | 0 |
| BALANCING NYCA | (4) | (2) | (1) | 1 | (116) | (3) | (1,938) |
| BALANCING NON-NYCA | 0 | 0 | 0 | 0 | 0 | 0 | 1,384 |
| BALANCING WHEELS | 0 | 0 | 0 | 0 | 0 | 0 | 801 |
| BALANCING VIRTUAL | 0 | 0 | 0 | 0 | 0 | 0 | 0 |
| UFE/LOSSES | 8 | 7 | 7 | 5 | 3 | 9 | 6,419 |
| | 12 | 13 | 14 | 15 | 16 | 17 | 18 |
| DAM NYCA | 0 | 0 | 0 | 0 | 0 | 0 | 0 |
| DAM NON-NYCA | 0 | 0 | 0 | 0 | 0 | 0 | 0 |
| DAM WHEELS | 0 | 0 | 0 | 0 | 0 | 0 | 0 |
| DAM VIRTUAL | 0 | 0 | 0 | 0 | 0 | 0 | 0 |
| BALANCING NYCA | 3 | (12) | (37) | (42) | 2,976 | (33) | (4) |
| BALANCING NON-NYCA | 0 | 0 | 0 | 0 | 0 | 0 | 0 |
| BALANCING WHEELS | 0 | 0 | 0 | 0 | 0 | 0 | 0 |
| BALANCING VIRTUAL | 0 | 0 | 0 | 0 | 0 | 0 | 0 |
| UFE/LOSSES | 7 | 13 | 37 | 42 | (3,008) | 33 | 4 |
| | 19 | 20 | 21 | 22 | 23 | 24 | 25 |
| DAM NYCA | 0 | 0 | 0 | 0 | 0 | 0 | 0 |
| DAM NON-NYCA | 0 | 0 | 0 | 0 | 0 | 0 | 0 |
| DAM WHEELS | 0 | 0 | 0 | 0 | 0 | 0 | 0 |
| DAM VIRTUAL | 0 | 0 | 0 | 0 | 0 | 0 | 0 |
| BALANCING NYCA | (2) | 1 | 2,993 | (6) | (46) | 0 | 0 |
| BALANCING NON-NYCA | 0 | 0 | 0 | 0 | 0 | 0 | 0 |
| BALANCING WHEELS | 0 | 0 | 0 | 0 | 0 | 0 | 0 |
| BALANCING VIRTUAL | 0 | 0 | 0 | 0 | 0 | 0 | 0 |
| UFE/LOSSES | 12 | (2) | (2,989) | 9 | 5 | 0 | 0 |
| | 26 | 27 | 28 | 29 | 30 | | |
| DAM NYCA | 0 | 0 | 0 | 0 | 0 | | |
| DAM NON-NYCA | 0 | 0 | 0 | 0 | 0 | | |
| DAM WHEELS | 0 | 0 | 0 | 0 | 0 | | |
| DAM VIRTUAL | 0 | 0 | 0 | 0 | 0 | | |
| BALANCING NYCA | 0 | 3 | (0) | (64) | (95) | | |
| BALANCING NON-NYCA | 0 | 0 | 0 | 0 | 0 | | |
| BALANCING WHEELS | 0 | 0 | 0 | 0 | 0 | | |
| BALANCING VIRTUAL | 0 | 0 | 0 | 0 | 0 | | |
| UFE/LOSSES | 0 | 0 | 0 | 67 | 124 | | |



SETTLEMENTS REPORT
 June 2023 Settlement Adjustment
 July 10, 2023

Initial – Market Residuals Delta Analysis

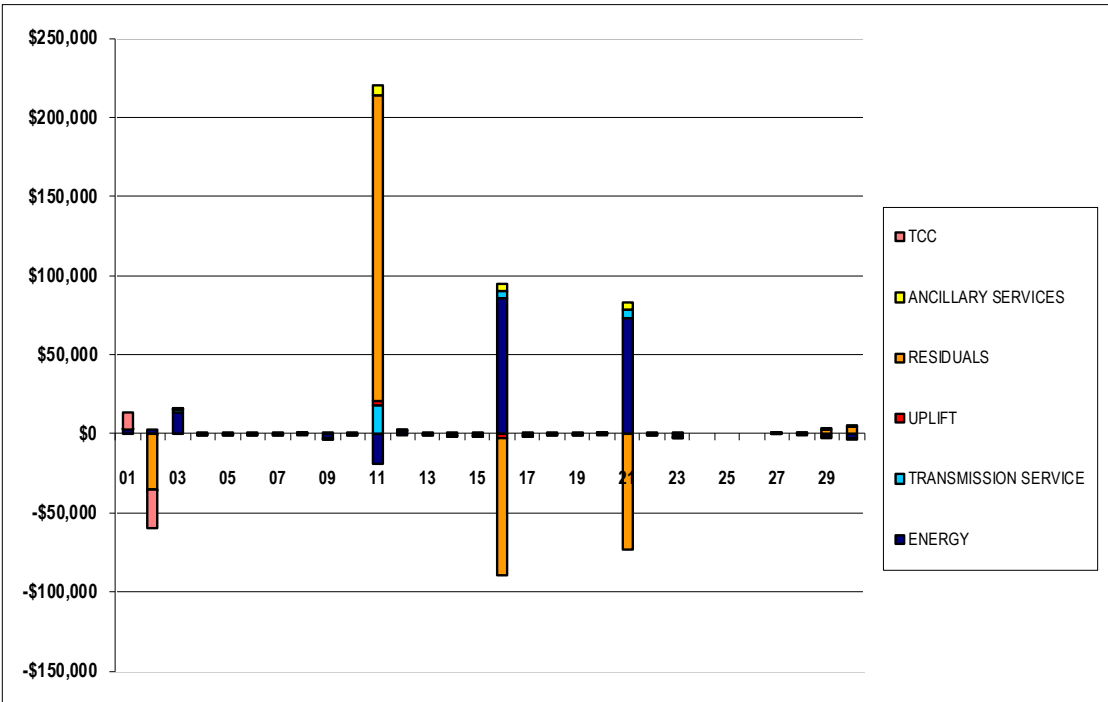
| | MONDAY | TUESDAY | WEDNESDAY | THURSDAY | FRIDAY | SATURDAY | SUNDAY |
|-------------------------|--------------|-----------|---------------|------------|---------------|------------|--------------|
| | | | | 1 | 2 | 3 | 4 |
| DAM ENERGY | | | | \$0.01 | \$0.00 | \$0.00 | \$0.00 |
| DAM LOSSES | | | | (\$0.01) | \$0.00 | \$0.01 | \$0.01 |
| BALANCING ENERGY | | | | \$238.26 | (\$35,649.37) | \$294.51 | \$151.96 |
| BALANCING LOSSES | | | | \$41.77 | \$538.11 | (\$116.99) | \$7.95 |
| BALANCING CONGESTION | | | | (\$25.31) | (\$84.36) | (\$0.01) | \$0.00 |
| FINANCIAL IMPACT CHARGE | | | | \$0.00 | \$0.00 | \$0.00 | \$0.00 |
| | 5 | 6 | 7 | 8 | 9 | 10 | 11 |
| DAM ENERGY | \$0.00 | (\$0.01) | \$0.00 | (\$0.01) | (\$0.01) | \$0.00 | \$0.01 |
| DAM LOSSES | (\$0.01) | \$0.00 | (\$0.01) | \$0.00 | (\$0.01) | \$0.00 | \$0.00 |
| BALANCING ENERGY | \$172.99 | \$143.43 | \$139.23 | \$114.79 | \$66.35 | \$173.48 | \$150,836.40 |
| BALANCING LOSSES | \$8.58 | \$6.09 | \$8.02 | \$5.43 | \$20.05 | \$396.81 | \$6,739.41 |
| BALANCING CONGESTION | (\$0.04) | (\$0.52) | \$0.00 | \$0.00 | \$0.00 | \$0.00 | \$35,394.97 |
| FINANCIAL IMPACT CHARGE | \$0.00 | \$0.00 | \$0.00 | \$0.00 | \$0.00 | \$0.00 | \$0.00 |
| | 12 | 13 | 14 | 15 | 16 | 17 | 18 |
| DAM ENERGY | (\$0.01) | \$0.00 | (\$0.01) | \$0.00 | \$0.00 | \$0.00 | \$0.00 |
| DAM LOSSES | (\$0.01) | \$0.01 | \$0.00 | \$0.00 | \$0.01 | \$0.00 | \$0.00 |
| BALANCING ENERGY | \$183.58 | \$278.71 | \$865.62 | \$950.08 | (\$75,009.96) | \$614.14 | \$74.51 |
| BALANCING LOSSES | (\$1,271.42) | \$14.38 | \$40.32 | \$44.26 | (\$5,124.72) | \$27.49 | (\$0.06) |
| BALANCING CONGESTION | (\$52.36) | (\$1.88) | \$5.40 | (\$2.16) | (\$6,885.55) | \$4.23 | (\$2.00) |
| FINANCIAL IMPACT CHARGE | \$0.00 | \$0.00 | \$0.00 | \$0.00 | \$0.00 | \$0.00 | \$0.00 |
| | 19 | 20 | 21 | 22 | 23 | 24 | 25 |
| DAM ENERGY | \$0.00 | \$0.01 | \$0.00 | \$0.00 | \$0.00 | \$0.00 | \$0.00 |
| DAM LOSSES | \$0.01 | (\$0.01) | (\$0.01) | \$0.00 | \$0.00 | \$0.00 | \$0.00 |
| BALANCING ENERGY | \$273.91 | (\$47.50) | (\$69,400.51) | \$210.35 | \$128.98 | \$0.00 | \$0.00 |
| BALANCING LOSSES | \$6.92 | \$0.14 | (\$3,835.00) | \$9.32 | \$12.78 | \$0.00 | \$0.00 |
| BALANCING CONGESTION | \$0.00 | (\$0.33) | (\$0.12) | (\$0.14) | \$52.53 | \$0.00 | \$0.00 |
| FINANCIAL IMPACT CHARGE | \$0.00 | \$0.00 | \$0.00 | \$0.00 | \$0.00 | \$0.00 | \$0.00 |
| | 26 | 27 | 28 | 29 | 30 | | |
| DAM ENERGY | \$0.00 | \$0.00 | \$0.00 | \$0.01 | \$0.00 | | |
| DAM LOSSES | \$0.00 | \$0.01 | \$0.00 | \$0.00 | (\$0.01) | | |
| BALANCING ENERGY | \$0.00 | (\$0.57) | \$0.07 | \$2,373.40 | \$3,857.77 | | |
| BALANCING LOSSES | \$0.00 | \$0.69 | \$0.00 | \$141.27 | \$194.44 | | |
| BALANCING CONGESTION | \$0.00 | \$0.21 | \$0.01 | (\$87.07) | \$61.73 | | |
| FINANCIAL IMPACT CHARGE | \$0.00 | \$0.00 | \$0.00 | \$0.00 | \$0.00 | | |



SETTLEMENTS REPORT
 June 2023 Settlement Adjustment
 July 10, 2023

Initial – Market Costs Delta Analysis

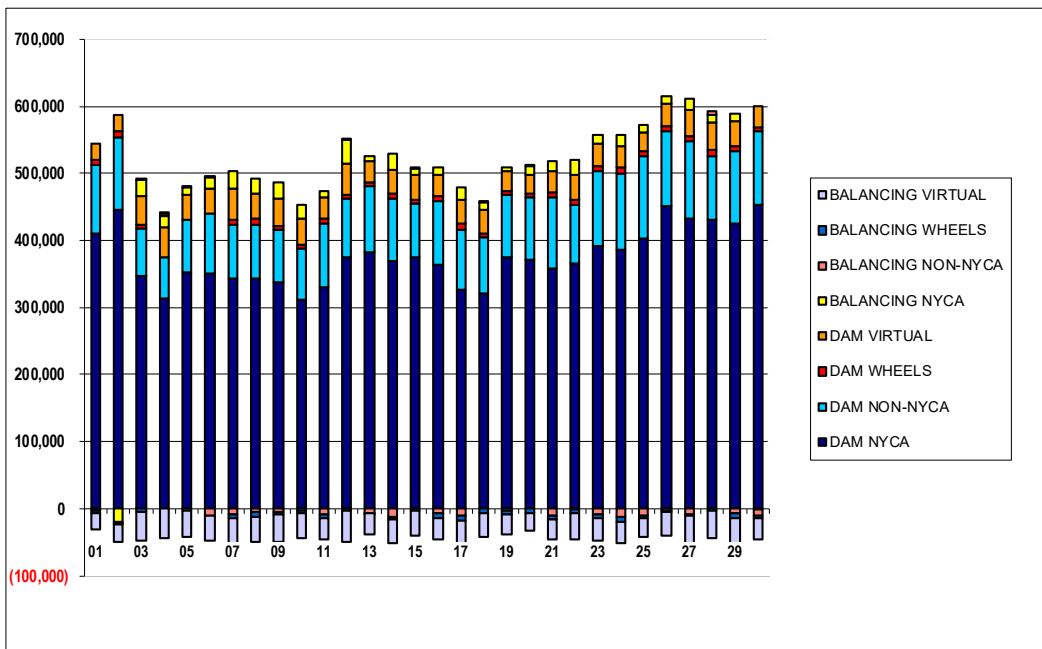
| | MONDAY | TUESDAY | WEDNESDAY | THURSDAY | FRIDAY | SATURDAY | SUNDAY |
|----------------------|--------------|------------|---------------|--------------|---------------|-------------|---------------|
| ENERGY | | | | 1 | 2 | 3 | 4 |
| TRANSMISSION SERVICE | | | | \$2,333.15 | \$2,572.03 | \$13,862.40 | (\$60.99) |
| UPLIFT | | | | \$137.81 | (\$47.07) | \$1,091.28 | (\$6.80) |
| RESIDUALS | | | | \$0.00 | \$0.05 | \$0.01 | \$0.00 |
| ANCILLARY SERVICES | | | | \$254.72 | (\$35,195.62) | \$177.52 | \$159.92 |
| TCC | | | | \$131.75 | (\$311.13) | \$1,043.35 | (\$6.48) |
| | | | | \$10,867.15 | (\$24,335.29) | \$0.00 | \$0.00 |
| ENERGY | 5 | 6 | 7 | 8 | 9 | 10 | 11 |
| TRANSMISSION SERVICE | (\$94.51) | (\$28.14) | (\$10.25) | (\$4.90) | (\$2,684.02) | (\$455.99) | (\$18,679.10) |
| UPLIFT | (\$7.40) | (\$2.74) | (\$1.21) | \$1.24 | (\$203.70) | (\$5.88) | \$17,601.64 |
| RESIDUALS | \$0.01 | \$0.00 | \$0.00 | \$0.00 | \$0.00 | \$0.00 | \$2,893.58 |
| ANCILLARY SERVICES | \$181.52 | \$148.99 | \$147.24 | \$120.21 | \$86.38 | \$570.29 | \$192,970.79 |
| TCC | (\$7.44) | (\$2.61) | (\$1.14) | \$1.20 | (\$195.76) | (\$5.54) | \$6,807.32 |
| | \$0.00 | \$0.00 | \$0.00 | \$0.00 | \$0.00 | \$0.00 | \$0.00 |
| ENERGY | 12 | 13 | 14 | 15 | 16 | 17 | 18 |
| TRANSMISSION SERVICE | \$1,266.14 | (\$286.44) | (\$843.19) | (\$992.20) | \$85,340.31 | (\$639.35) | (\$70.48) |
| UPLIFT | \$5.17 | (\$21.54) | (\$65.32) | (\$73.57) | \$5,208.56 | (\$57.06) | (\$7.63) |
| RESIDUALS | \$0.00 | \$0.00 | (\$0.01) | \$0.02 | (\$2,578.64) | \$0.01 | \$0.00 |
| ANCILLARY SERVICES | (\$1,140.22) | \$291.22 | \$911.33 | \$992.18 | (\$87,020.22) | \$645.86 | \$72.45 |
| TCC | \$4.68 | (\$20.57) | (\$62.44) | (\$69.73) | \$3,933.34 | (\$54.55) | (\$9.33) |
| | \$0.00 | \$0.00 | \$0.00 | \$0.00 | \$0.00 | \$0.00 | \$0.00 |
| ENERGY | 19 | 20 | 21 | 22 | 23 | 24 | 25 |
| TRANSMISSION SERVICE | (\$0.54) | \$26.72 | \$73,340.62 | (\$167.81) | (\$1,511.53) | \$0.00 | \$0.00 |
| UPLIFT | (\$2.86) | \$2.09 | \$5,238.48 | (\$10.14) | (\$81.15) | \$0.00 | \$0.00 |
| RESIDUALS | \$0.00 | \$0.00 | (\$0.01) | \$0.00 | \$0.00 | \$0.00 | \$0.00 |
| ANCILLARY SERVICES | \$280.84 | (\$47.69) | (\$73,235.64) | \$219.53 | \$194.29 | \$0.00 | \$0.00 |
| TCC | (\$2.75) | \$1.34 | \$3,990.40 | (\$9.70) | (\$78.02) | \$0.00 | \$0.00 |
| | \$0.00 | \$0.00 | \$0.00 | \$0.00 | \$0.00 | \$0.00 | \$0.00 |
| ENERGY | 26 | 27 | 28 | 29 | 30 | | |
| TRANSMISSION SERVICE | \$0.00 | \$96.38 | (\$0.15) | (\$2,337.44) | (\$3,175.62) | | |
| UPLIFT | \$0.00 | \$5.25 | \$0.00 | (\$112.76) | (\$166.41) | | |
| RESIDUALS | \$0.00 | \$0.59 | \$0.00 | (\$0.01) | \$0.00 | | |
| ANCILLARY SERVICES | \$0.00 | \$0.34 | \$0.08 | \$2,427.61 | \$4,113.93 | | |
| TCC | \$0.00 | \$137.85 | \$106.09 | \$41.48 | \$157.48 | | |
| | \$0.00 | \$0.00 | \$0.00 | \$0.00 | \$0.00 | | |



SETTLEMENTS REPORT
 June 2023 Settlement Adjustment
 July 10, 2023

Weekly Settlement – Market Supply Analysis

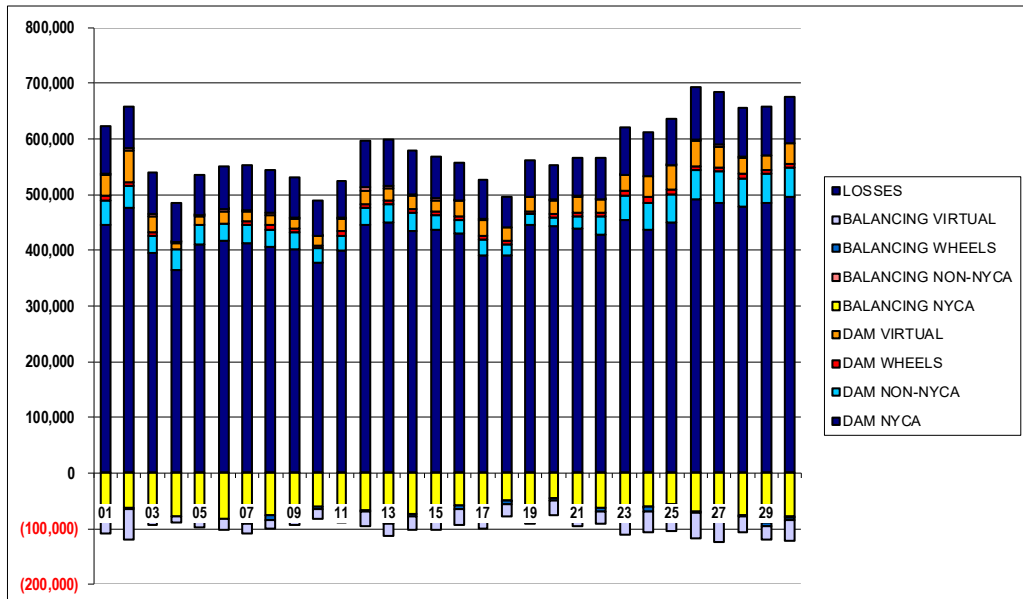
| | MONDAY | TUESDAY | WEDNESDAY | THURSDAY | FRIDAY | SATURDAY | SUNDAY |
|--------------------|----------|----------|-----------|----------|----------|----------|----------|
| | | | | 1 | 2 | 3 | 4 |
| DAM NYCA | | | | 410,758 | 446,089 | 347,853 | 314,413 |
| DAM NON-NYCA | | | | 101,553 | 107,971 | 69,364 | 60,723 |
| DAM WHEELS | | | | 8,375 | 8,409 | 6,608 | 0 |
| DAM VIRTUAL | | | | 23,668 | 25,286 | 42,732 | 44,141 |
| BALANCING NYCA | | | | (260) | (19,367) | 24,455 | 17,508 |
| BALANCING NON-NYCA | | | | (2,677) | (2,812) | 948 | 3,351 |
| BALANCING WHEELS | | | | (4,202) | (1,611) | (4,247) | 700 |
| BALANCING VIRTUAL | | | | (23,668) | (25,286) | (42,732) | (44,141) |
| | 5 | 6 | 7 | 8 | 9 | 10 | 11 |
| DAM NYCA | 353,596 | 350,293 | 343,684 | 342,729 | 338,272 | 310,948 | 330,872 |
| DAM NON-NYCA | 76,514 | 90,487 | 80,312 | 81,194 | 77,007 | 77,169 | 93,578 |
| DAM WHEELS | 0 | 0 | 6,415 | 8,902 | 7,158 | 6,408 | 7,939 |
| DAM VIRTUAL | 37,978 | 36,046 | 46,529 | 36,816 | 40,793 | 37,852 | 31,217 |
| BALANCING NYCA | 11,880 | 17,136 | 26,868 | 22,392 | 24,192 | 20,354 | 10,250 |
| BALANCING NON-NYCA | (3,608) | (10,754) | (8,562) | (4,721) | (4,305) | (2,332) | (8,263) |
| BALANCING WHEELS | 450 | 50 | (4,930) | (7,400) | (4,517) | (4,051) | (6,772) |
| BALANCING VIRTUAL | (37,978) | (36,046) | (46,529) | (36,816) | (40,793) | (37,852) | (31,217) |
| | 12 | 13 | 14 | 15 | 16 | 17 | 18 |
| DAM NYCA | 375,614 | 381,591 | 369,805 | 375,825 | 363,184 | 327,317 | 321,112 |
| DAM NON-NYCA | 86,695 | 99,555 | 93,018 | 78,906 | 95,134 | 89,269 | 83,722 |
| DAM WHEELS | 6,408 | 6,525 | 6,433 | 6,433 | 7,414 | 7,909 | 6,408 |
| DAM VIRTUAL | 46,862 | 30,580 | 35,913 | 37,310 | 32,250 | 36,301 | 35,317 |
| BALANCING NYCA | 35,186 | 7,239 | 24,273 | 8,663 | 10,909 | 18,465 | 9,606 |
| BALANCING NON-NYCA | 586 | (5,812) | (11,463) | 552 | (7,229) | (9,625) | 2,952 |
| BALANCING WHEELS | (2,253) | (1,744) | (3,914) | (3,696) | (7,062) | (7,859) | (6,408) |
| BALANCING VIRTUAL | (46,862) | (30,580) | (35,913) | (37,310) | (32,250) | (36,301) | (35,317) |
| | 19 | 20 | 21 | 22 | 23 | 24 | 25 |
| DAM NYCA | 374,909 | 371,863 | 358,942 | 366,367 | 391,898 | 386,899 | 403,295 |
| DAM NON-NYCA | 93,014 | 92,440 | 106,106 | 87,064 | 111,604 | 111,953 | 122,094 |
| DAM WHEELS | 6,408 | 6,408 | 6,408 | 6,708 | 7,083 | 9,610 | 7,476 |
| DAM VIRTUAL | 29,705 | 27,364 | 31,366 | 38,074 | 33,951 | 32,787 | 28,085 |
| BALANCING NYCA | 5,018 | 13,202 | 14,901 | 22,053 | 13,043 | 16,087 | 12,238 |
| BALANCING NON-NYCA | (3,341) | 973 | (9,625) | (1,642) | (9,057) | (12,197) | (9,658) |
| BALANCING WHEELS | (5,967) | (6,276) | (5,705) | (5,704) | (5,464) | (6,915) | (4,873) |
| BALANCING VIRTUAL | (29,705) | (27,364) | (31,366) | (38,074) | (33,951) | (32,787) | (28,085) |
| | 26 | 27 | 28 | 29 | 30 | | |
| DAM NYCA | 451,318 | 432,087 | 431,373 | 426,062 | 452,593 | | |
| DAM NON-NYCA | 112,616 | 116,710 | 94,939 | 107,486 | 109,669 | | |
| DAM WHEELS | 6,458 | 6,758 | 8,540 | 8,068 | 6,683 | | |
| DAM VIRTUAL | 34,447 | 39,863 | 41,018 | 36,627 | 31,680 | | |
| BALANCING NYCA | 9,823 | 15,333 | 11,243 | 10,705 | (1,132) | | |
| BALANCING NON-NYCA | (2,389) | (8,118) | 6,512 | (7,192) | (8,737) | | |
| BALANCING WHEELS | (3,240) | (3,118) | (2,517) | (6,961) | (4,967) | | |
| BALANCING VIRTUAL | (34,447) | (39,863) | (41,018) | (36,627) | (31,680) | | |



SETTLEMENTS REPORT
 June 2023 Settlement Adjustment
 July 10, 2023

Initial Settlement Adjustment – Market Supply Analysis

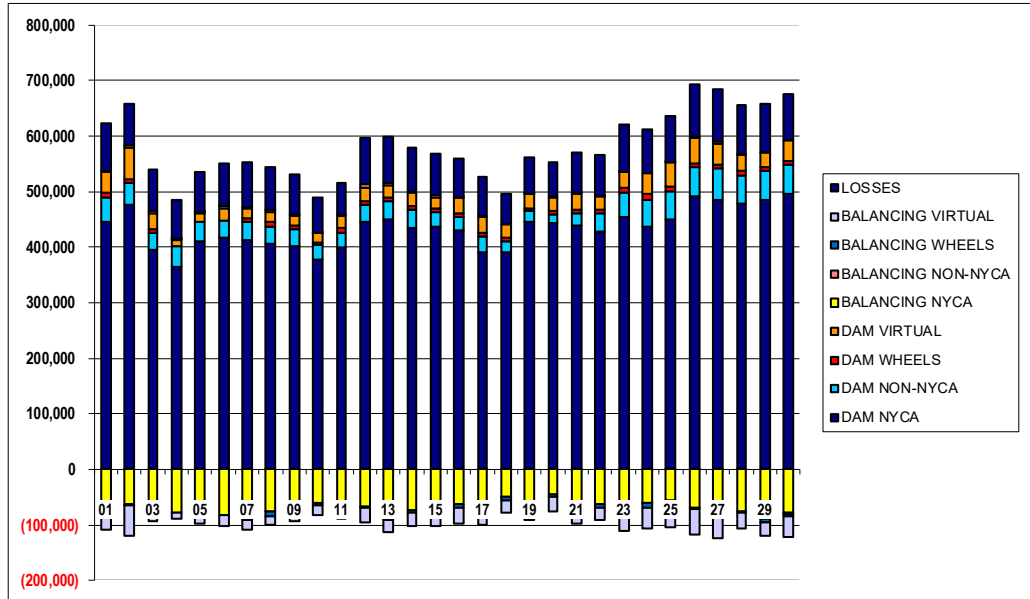
| | MONDAY | TUESDAY | WEDNESDAY | THURSDAY | FRIDAY | SATURDAY | SUNDAY |
|--------------------|----------|----------|-----------|----------|----------|----------|----------|
| | | | | 1 | 2 | 3 | 4 |
| DAM NYCA | | | | 444,891 | 475,475 | 394,819 | 364,878 |
| DAM NON-NYCA | | | | 45,052 | 39,458 | 31,574 | 36,995 |
| DAM WHEELS | | | | 8,375 | 8,409 | 6,608 | 0 |
| DAM VIRTUAL | | | | 38,320 | 55,339 | 26,992 | 11,603 |
| BALANCING NYCA | | | | (66,087) | (62,477) | (62,063) | (77,048) |
| BALANCING NON-NYCA | | | | 315 | 5,741 | 5,986 | 1,581 |
| BALANCING WHEELS | | | | (4,202) | (1,736) | (4,247) | 700 |
| BALANCING VIRTUAL | | | | (38,320) | (55,339) | (26,992) | (11,603) |
| UFE/LOSSES | | | | 85,290 | 72,905 | 72,942 | 69,593 |
| | 5 | 6 | 7 | 8 | 9 | 10 | 11 |
| DAM NYCA | 409,922 | 418,115 | 413,012 | 406,422 | 402,841 | 377,020 | 398,760 |
| DAM NON-NYCA | 34,926 | 30,045 | 33,389 | 30,869 | 29,580 | 26,054 | 26,981 |
| DAM WHEELS | 0 | 0 | 6,415 | 8,902 | 7,158 | 6,408 | 7,939 |
| DAM VIRTUAL | 16,421 | 21,122 | 16,590 | 17,065 | 16,882 | 16,459 | 22,392 |
| BALANCING NYCA | (80,249) | (81,718) | (87,053) | (76,304) | (71,097) | (61,216) | (61,499) |
| BALANCING NON-NYCA | 2,504 | 4,102 | 3,542 | 3,698 | 1,410 | 614 | 3,587 |
| BALANCING WHEELS | 450 | 50 | (4,930) | (7,400) | (4,517) | (4,051) | (5,971) |
| BALANCING VIRTUAL | (16,421) | (21,122) | (16,590) | (17,065) | (16,882) | (16,459) | (22,392) |
| UFE/LOSSES | 71,283 | 76,625 | 79,419 | 76,915 | 72,319 | 63,673 | 64,473 |
| | 12 | 13 | 14 | 15 | 16 | 17 | 18 |
| DAM NYCA | 445,885 | 450,442 | 434,232 | 437,409 | 431,155 | 391,456 | 390,171 |
| DAM NON-NYCA | 30,512 | 31,855 | 32,827 | 25,765 | 22,657 | 27,558 | 21,528 |
| DAM WHEELS | 6,408 | 6,525 | 6,433 | 6,433 | 7,414 | 7,909 | 6,408 |
| DAM VIRTUAL | 24,605 | 21,648 | 24,133 | 21,016 | 28,209 | 26,725 | 22,217 |
| BALANCING NYCA | (67,660) | (88,644) | (73,728) | (77,003) | (58,854) | (65,748) | (49,970) |
| BALANCING NON-NYCA | 7,031 | 5,468 | 3,344 | 3,792 | 364 | 4,086 | (278) |
| BALANCING WHEELS | (2,253) | (1,744) | (3,914) | (3,696) | (7,062) | (7,859) | (6,408) |
| BALANCING VIRTUAL | (24,605) | (21,648) | (24,133) | (21,016) | (28,209) | (26,725) | (22,217) |
| UFE/LOSSES | 82,324 | 83,452 | 78,957 | 73,983 | 66,644 | 68,073 | 55,941 |
| | 19 | 20 | 21 | 22 | 23 | 24 | 25 |
| DAM NYCA | 444,675 | 442,597 | 439,215 | 427,440 | 453,453 | 436,550 | 449,329 |
| DAM NON-NYCA | 19,821 | 16,492 | 22,650 | 34,278 | 45,829 | 49,190 | 51,985 |
| DAM WHEELS | 6,408 | 6,408 | 6,408 | 6,708 | 7,083 | 9,610 | 7,476 |
| DAM VIRTUAL | 25,375 | 24,920 | 27,334 | 23,178 | 30,101 | 38,360 | 44,309 |
| BALANCING NYCA | (60,426) | (44,086) | (62,501) | (63,314) | (75,728) | (61,254) | (55,973) |
| BALANCING NON-NYCA | 146 | 1,007 | 2,238 | 822 | 184 | (217) | 328 |
| BALANCING WHEELS | (5,967) | (6,276) | (5,705) | (5,704) | (5,464) | (6,915) | (4,873) |
| BALANCING VIRTUAL | (25,375) | (24,920) | (27,334) | (23,178) | (30,101) | (38,360) | (44,309) |
| UFE/LOSSES | 65,395 | 62,467 | 68,726 | 74,618 | 83,709 | 78,473 | 82,300 |
| | 26 | 27 | 28 | 29 | 30 | | |
| DAM NYCA | 491,819 | 485,335 | 478,953 | 484,407 | 496,978 | | |
| DAM NON-NYCA | 51,683 | 55,934 | 50,285 | 52,371 | 51,022 | | |
| DAM WHEELS | 6,458 | 6,758 | 8,540 | 8,068 | 6,683 | | |
| DAM VIRTUAL | 46,088 | 38,114 | 28,527 | 24,752 | 37,188 | | |
| BALANCING NYCA | (68,379) | (82,706) | (75,207) | (86,504) | (77,491) | | |
| BALANCING NON-NYCA | 3,123 | 3,644 | 1,591 | (1,817) | (2,710) | | |
| BALANCING WHEELS | (3,240) | (3,118) | (2,517) | (6,961) | (4,967) | | |
| BALANCING VIRTUAL | (46,088) | (38,114) | (28,527) | (24,752) | (37,188) | | |
| UFE/LOSSES | 93,122 | 93,808 | 88,444 | 88,607 | 84,622 | | |



SETTLEMENTS REPORT
 June 2023 Settlement Adjustment
 July 10, 2023

Weekly Settlement – Market Withdrawals Analysis

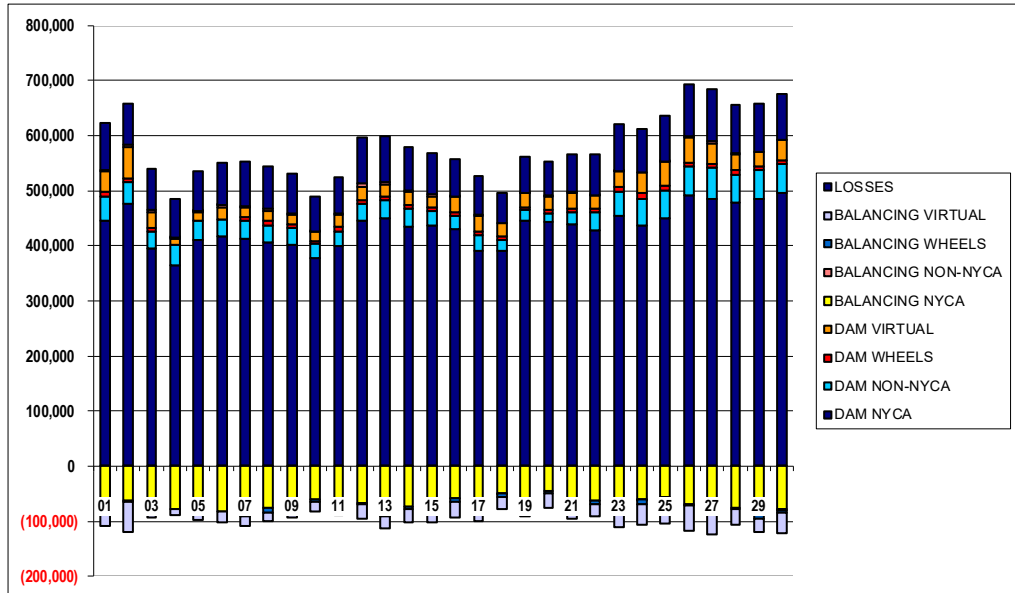
| | MONDAY | TUESDAY | WEDNESDAY | THURSDAY | FRIDAY | SATURDAY | SUNDAY |
|--------------------|----------|----------|-----------|----------|----------|----------|----------|
| | | | | 1 | 2 | 3 | 4 |
| DAM NYCA | | | | 444,891 | 475,475 | 394,819 | 364,878 |
| DAM NON-NYCA | | | | 45,052 | 39,458 | 31,574 | 36,995 |
| DAM WHEELS | | | | 8,375 | 8,409 | 6,608 | 0 |
| DAM VIRTUAL | | | | 38,320 | 55,339 | 26,992 | 11,603 |
| BALANCING NYCA | | | | (66,166) | (63,001) | (62,687) | (77,044) |
| BALANCING NON-NYCA | | | | 315 | 6,145 | 5,986 | 1,581 |
| BALANCING WHEELS | | | | (4,202) | (1,611) | (4,247) | 700 |
| BALANCING VIRTUAL | | | | (38,320) | (55,339) | (26,992) | (11,603) |
| UFE/LOSSES | | | | 85,282 | 73,803 | 72,928 | 69,585 |
| | 5 | 6 | 7 | 8 | 9 | 10 | 11 |
| DAM NYCA | 409,922 | 418,115 | 413,012 | 406,422 | 402,841 | 377,020 | 398,760 |
| DAM NON-NYCA | 34,926 | 30,045 | 33,389 | 30,869 | 29,580 | 26,054 | 26,981 |
| DAM WHEELS | 0 | 0 | 6,415 | 8,902 | 7,158 | 6,408 | 7,939 |
| DAM VIRTUAL | 16,421 | 21,122 | 16,590 | 17,065 | 16,882 | 16,459 | 22,392 |
| BALANCING NYCA | (80,245) | (81,717) | (87,052) | (76,304) | (70,980) | (61,213) | (59,561) |
| BALANCING NON-NYCA | 2,504 | 4,102 | 3,542 | 3,698 | 1,410 | 614 | 2,203 |
| BALANCING WHEELS | 450 | 50 | (4,930) | (7,400) | (4,517) | (4,051) | (6,772) |
| BALANCING VIRTUAL | (16,421) | (21,122) | (16,590) | (17,065) | (16,882) | (16,459) | (22,392) |
| UFE/LOSSES | 71,275 | 76,617 | 79,412 | 76,909 | 72,316 | 63,664 | 58,053 |
| | 12 | 13 | 14 | 15 | 16 | 17 | 18 |
| DAM NYCA | 445,885 | 450,442 | 434,232 | 437,409 | 431,155 | 391,456 | 390,171 |
| DAM NON-NYCA | 30,512 | 31,855 | 32,827 | 25,765 | 22,657 | 27,558 | 21,528 |
| DAM WHEELS | 6,408 | 6,525 | 6,433 | 6,433 | 7,414 | 7,909 | 6,408 |
| DAM VIRTUAL | 24,605 | 21,648 | 24,133 | 21,016 | 28,209 | 26,725 | 22,217 |
| BALANCING NYCA | (67,663) | (88,631) | (73,690) | (76,961) | (61,831) | (65,715) | (49,965) |
| BALANCING NON-NYCA | 7,031 | 5,468 | 3,344 | 3,792 | 364 | 4,086 | (278) |
| BALANCING WHEELS | (2,253) | (1,744) | (3,914) | (3,696) | (7,062) | (7,859) | (6,408) |
| BALANCING VIRTUAL | (24,605) | (21,648) | (24,133) | (21,016) | (28,209) | (26,725) | (22,217) |
| UFE/LOSSES | 82,317 | 83,439 | 78,920 | 73,941 | 69,653 | 68,041 | 55,936 |
| | 19 | 20 | 21 | 22 | 23 | 24 | 25 |
| DAM NYCA | 444,675 | 442,597 | 439,215 | 427,440 | 453,453 | 436,550 | 449,329 |
| DAM NON-NYCA | 19,821 | 16,492 | 22,650 | 34,278 | 45,829 | 49,190 | 51,985 |
| DAM WHEELS | 6,408 | 6,408 | 6,408 | 6,708 | 7,083 | 9,610 | 7,476 |
| DAM VIRTUAL | 25,375 | 24,920 | 27,334 | 23,178 | 30,101 | 38,360 | 44,309 |
| BALANCING NYCA | (60,425) | (44,088) | (65,495) | (63,308) | (75,681) | (61,254) | (55,973) |
| BALANCING NON-NYCA | 146 | 1,007 | 2,238 | 822 | 184 | (217) | 328 |
| BALANCING WHEELS | (5,967) | (6,276) | (5,705) | (5,704) | (5,464) | (6,915) | (4,873) |
| BALANCING VIRTUAL | (25,375) | (24,920) | (27,334) | (23,178) | (30,101) | (38,360) | (44,309) |
| UFE/LOSSES | 65,384 | 62,469 | 71,715 | 74,609 | 83,704 | 78,473 | 82,300 |
| | 26 | 27 | 28 | 29 | 30 | | |
| DAM NYCA | 491,819 | 485,335 | 478,953 | 484,407 | 496,978 | | |
| DAM NON-NYCA | 51,683 | 55,934 | 50,285 | 52,371 | 51,022 | | |
| DAM WHEELS | 6,458 | 6,758 | 8,540 | 8,068 | 6,683 | | |
| DAM VIRTUAL | 46,088 | 38,114 | 28,527 | 24,752 | 37,188 | | |
| BALANCING NYCA | (68,379) | (82,709) | (75,207) | (86,440) | (77,396) | | |
| BALANCING NON-NYCA | 3,123 | 3,644 | 1,591 | (1,817) | (2,710) | | |
| BALANCING WHEELS | (3,240) | (3,118) | (2,517) | (6,961) | (4,967) | | |
| BALANCING VIRTUAL | (46,088) | (38,114) | (28,527) | (24,752) | (37,188) | | |
| UFE/LOSSES | 93,122 | 93,808 | 88,444 | 88,540 | 84,498 | | |



SETTLEMENTS REPORT
 June 2023 Settlement Adjustment
 July 10, 2023

Initial Settlement Adjustment – Market Withdrawals Analysis

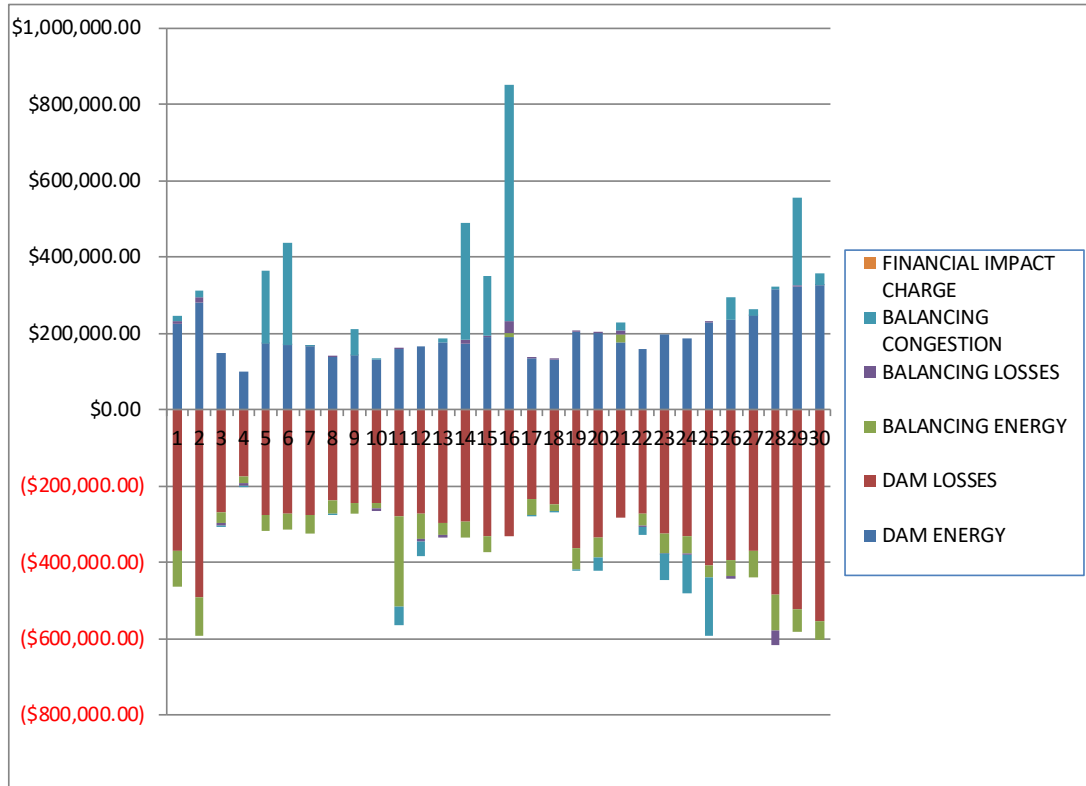
| | MONDAY | TUESDAY | WEDNESDAY | THURSDAY | FRIDAY | SATURDAY | SUNDAY |
|--------------------|----------|----------|-----------|----------|----------|----------|----------|
| | | | | 1 | 2 | 3 | 4 |
| DAM NYCA | | | | 444,891 | 475,475 | 394,819 | 364,878 |
| DAM NON-NYCA | | | | 45,052 | 39,458 | 31,574 | 36,995 |
| DAM WHEELS | | | | 8,375 | 8,409 | 6,608 | 0 |
| DAM VIRTUAL | | | | 38,320 | 55,339 | 26,992 | 11,603 |
| BALANCING NYCA | | | | (66,087) | (62,477) | (62,063) | (77,048) |
| BALANCING NON-NYCA | | | | 315 | 5,741 | 5,986 | 1,581 |
| BALANCING WHEELS | | | | (4,202) | (1,736) | (4,247) | 700 |
| BALANCING VIRTUAL | | | | (38,320) | (55,339) | (26,992) | (11,603) |
| UFE/LOSSES | | | | 85,290 | 72,905 | 72,942 | 69,593 |
| | 5 | 6 | 7 | 8 | 9 | 10 | 11 |
| DAM NYCA | 409,922 | 418,115 | 413,012 | 406,422 | 402,841 | 377,020 | 398,760 |
| DAM NON-NYCA | 34,926 | 30,045 | 33,389 | 30,869 | 29,580 | 26,054 | 26,981 |
| DAM WHEELS | 0 | 0 | 6,415 | 8,902 | 7,158 | 6,408 | 7,939 |
| DAM VIRTUAL | 16,421 | 21,122 | 16,590 | 17,065 | 16,882 | 16,459 | 22,392 |
| BALANCING NYCA | (80,249) | (81,718) | (87,053) | (76,304) | (71,097) | (61,216) | (61,499) |
| BALANCING NON-NYCA | 2,504 | 4,102 | 3,542 | 3,698 | 1,410 | 614 | 3,587 |
| BALANCING WHEELS | 450 | 50 | (4,930) | (7,400) | (4,517) | (4,051) | (5,971) |
| BALANCING VIRTUAL | (16,421) | (21,122) | (16,590) | (17,065) | (16,882) | (16,459) | (22,392) |
| UFE/LOSSES | 71,283 | 76,625 | 79,419 | 76,915 | 72,319 | 63,673 | 64,473 |
| | 12 | 13 | 14 | 15 | 16 | 17 | 18 |
| DAM NYCA | 445,885 | 450,442 | 434,232 | 437,409 | 431,155 | 391,456 | 390,171 |
| DAM NON-NYCA | 30,512 | 31,855 | 32,827 | 25,765 | 22,657 | 27,558 | 21,528 |
| DAM WHEELS | 6,408 | 6,525 | 6,433 | 6,433 | 7,414 | 7,909 | 6,408 |
| DAM VIRTUAL | 24,605 | 21,648 | 24,133 | 21,016 | 28,209 | 26,725 | 22,217 |
| BALANCING NYCA | (67,660) | (88,644) | (73,728) | (77,003) | (58,854) | (65,748) | (49,970) |
| BALANCING NON-NYCA | 7,031 | 5,468 | 3,344 | 3,792 | 364 | 4,086 | (278) |
| BALANCING WHEELS | (2,253) | (1,744) | (3,914) | (3,696) | (7,062) | (7,859) | (6,408) |
| BALANCING VIRTUAL | (24,605) | (21,648) | (24,133) | (21,016) | (28,209) | (26,725) | (22,217) |
| UFE/LOSSES | 82,324 | 83,452 | 78,957 | 73,983 | 66,644 | 68,073 | 55,941 |
| | 19 | 20 | 21 | 22 | 23 | 24 | 25 |
| DAM NYCA | 444,675 | 442,597 | 439,215 | 427,440 | 453,453 | 436,550 | 449,329 |
| DAM NON-NYCA | 19,821 | 16,492 | 22,650 | 34,278 | 45,829 | 49,190 | 51,985 |
| DAM WHEELS | 6,408 | 6,408 | 6,408 | 6,708 | 7,083 | 9,610 | 7,476 |
| DAM VIRTUAL | 25,375 | 24,920 | 27,334 | 23,178 | 30,101 | 38,360 | 44,309 |
| BALANCING NYCA | (60,426) | (44,086) | (62,501) | (63,314) | (75,728) | (61,254) | (55,973) |
| BALANCING NON-NYCA | 146 | 1,007 | 2,238 | 822 | 184 | (217) | 328 |
| BALANCING WHEELS | (5,967) | (6,276) | (5,705) | (5,704) | (5,464) | (6,915) | (4,873) |
| BALANCING VIRTUAL | (25,375) | (24,920) | (27,334) | (23,178) | (30,101) | (38,360) | (44,309) |
| UFE/LOSSES | 65,395 | 62,467 | 68,726 | 74,618 | 83,709 | 78,473 | 82,300 |
| | 26 | 27 | 28 | 29 | 30 | | |
| DAM NYCA | 491,819 | 485,335 | 478,953 | 484,407 | 496,978 | | |
| DAM NON-NYCA | 51,683 | 55,934 | 50,285 | 52,371 | 51,022 | | |
| DAM WHEELS | 6,458 | 6,758 | 8,540 | 8,068 | 6,683 | | |
| DAM VIRTUAL | 46,088 | 38,114 | 28,527 | 24,752 | 37,188 | | |
| BALANCING NYCA | (68,379) | (82,706) | (75,207) | (86,504) | (77,491) | | |
| BALANCING NON-NYCA | 3,123 | 3,644 | 1,591 | (1,817) | (2,710) | | |
| BALANCING WHEELS | (3,240) | (3,118) | (2,517) | (6,961) | (4,967) | | |
| BALANCING VIRTUAL | (46,088) | (38,114) | (28,527) | (24,752) | (37,188) | | |
| UFE/LOSSES | 93,122 | 93,808 | 88,444 | 88,607 | 84,622 | | |



SETTLEMENTS REPORT
 June 2023 Settlement Adjustment
 July 10, 2023

Weekly Settlement – Market Residuals Analysis

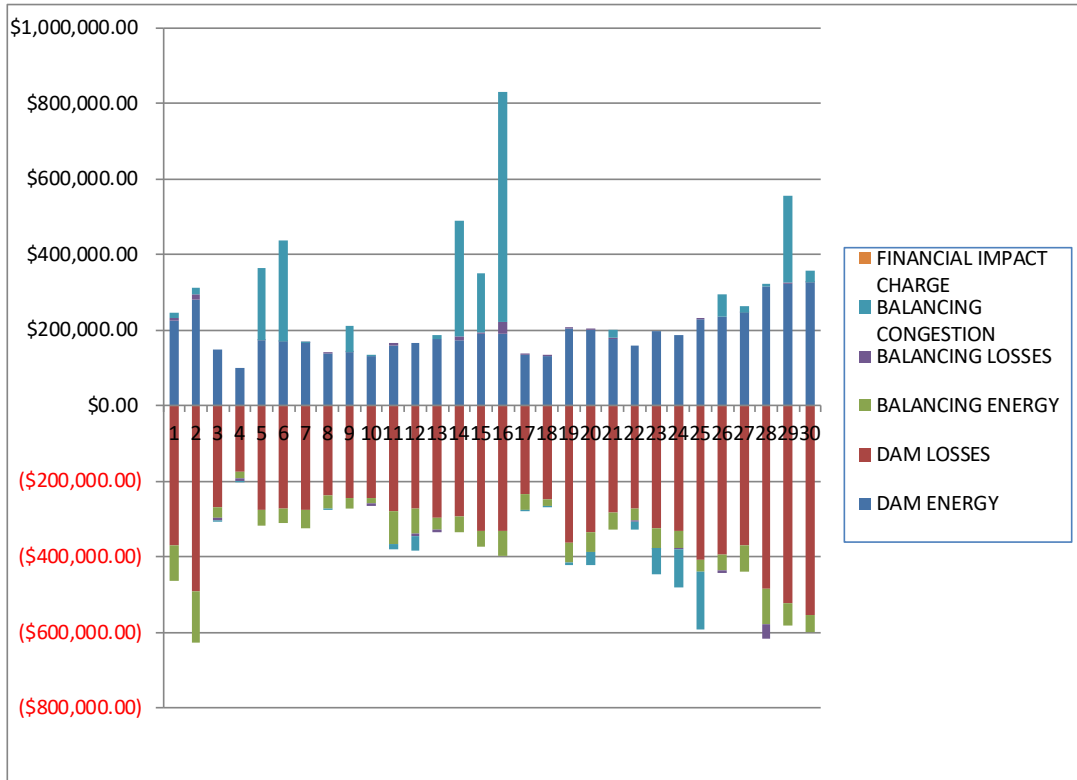
| | MONDAY | TUESDAY | WEDNESDAY | THURSDAY | FRIDAY | SATURDAY | SUNDAY |
|-------------------------|----------------|----------------|----------------|----------------|----------------|----------------|----------------|
| | | | | 1 | 2 | 3 | 4 |
| DAM ENERGY | | | | \$223,671.33 | \$280,738.72 | \$149,008.08 | \$100,492.83 |
| DAM LOSSES | | | | (\$371,924.29) | (\$492,351.82) | (\$270,922.28) | (\$176,115.44) |
| BALANCING ENERGY | | | | (\$93,905.09) | (\$101,375.72) | (\$26,561.08) | (\$15,802.76) |
| BALANCING LOSSES | | | | \$6,449.80 | \$12,279.54 | (\$7,289.88) | (\$7,659.11) |
| BALANCING CONGESTION | | | | \$14,247.00 | \$19,508.62 | (\$2,506.94) | (\$2,608.90) |
| FINANCIAL IMPACT CHARGE | | | | \$0.00 | \$0.00 | \$0.00 | \$0.00 |
| | 5 | 6 | 7 | 8 | 9 | 10 | 11 |
| DAM ENERGY | \$170,628.53 | \$169,172.78 | \$163,620.82 | \$137,556.84 | \$140,380.70 | \$130,345.94 | \$157,969.61 |
| DAM LOSSES | (\$276,253.45) | (\$273,158.55) | (\$276,833.20) | (\$236,661.63) | (\$244,685.96) | (\$243,515.40) | (\$279,902.68) |
| BALANCING ENERGY | (\$41,334.08) | (\$39,817.29) | (\$46,681.24) | (\$35,678.85) | (\$28,027.34) | (\$15,162.36) | (\$236,275.06) |
| BALANCING LOSSES | \$345.25 | \$300.54 | \$551.06 | \$5,032.19 | \$1,359.76 | (\$8,086.91) | \$1,086.91 |
| BALANCING CONGESTION | \$192,940.46 | \$266,778.05 | \$327.65 | (\$460.77) | \$67,258.88 | \$1,626.93 | (\$49,401.39) |
| FINANCIAL IMPACT CHARGE | \$0.00 | \$0.00 | \$0.00 | \$0.00 | \$0.00 | \$0.00 | \$0.00 |
| | 12 | 13 | 14 | 15 | 16 | 17 | 18 |
| DAM ENERGY | \$164,903.95 | \$176,637.31 | \$172,915.25 | \$189,978.24 | \$190,902.25 | \$133,536.91 | \$130,755.71 |
| DAM LOSSES | (\$273,569.22) | (\$295,864.24) | (\$293,899.13) | (\$331,670.03) | (\$332,513.40) | (\$234,100.78) | (\$247,251.22) |
| BALANCING ENERGY | (\$64,614.47) | (\$31,807.94) | (\$42,473.28) | (\$43,269.48) | \$7,855.85 | (\$41,925.46) | (\$19,472.85) |
| BALANCING LOSSES | (\$8,043.39) | (\$7,010.76) | \$8,107.30 | \$4,774.54 | \$33,555.85 | \$5,206.47 | \$3,093.30 |
| BALANCING CONGESTION | (\$37,717.35) | \$10,196.14 | \$308,727.24 | \$153,298.19 | \$617,890.34 | (\$661.78) | (\$2,399.26) |
| FINANCIAL IMPACT CHARGE | \$0.00 | \$0.00 | \$0.00 | \$0.00 | \$0.00 | \$0.00 | \$0.00 |
| | 19 | 20 | 21 | 22 | 23 | 24 | 25 |
| DAM ENERGY | \$202,494.14 | \$198,740.36 | \$174,586.94 | \$157,896.24 | \$197,148.39 | \$187,231.95 | \$228,906.40 |
| DAM LOSSES | (\$364,621.93) | (\$337,140.58) | (\$281,658.83) | (\$272,937.17) | (\$326,335.20) | (\$332,525.67) | (\$409,821.38) |
| BALANCING ENERGY | (\$52,756.01) | (\$51,708.90) | \$23,255.90 | (\$30,166.09) | (\$49,489.97) | (\$44,313.41) | (\$30,017.57) |
| BALANCING LOSSES | \$5,930.84 | \$3,515.23 | \$8,050.85 | (\$6,248.01) | (\$2,078.92) | (\$4,879.98) | \$1,414.37 |
| BALANCING CONGESTION | (\$4,762.90) | (\$33,658.26) | \$23,039.31 | (\$20,874.80) | (\$70,504.73) | (\$101,191.22) | (\$154,581.23) |
| FINANCIAL IMPACT CHARGE | \$0.00 | \$0.00 | \$0.00 | \$0.00 | \$0.00 | \$0.00 | \$0.00 |
| | 26 | 27 | 28 | 29 | 30 | | |
| DAM ENERGY | \$235,840.17 | \$245,171.05 | \$314,267.86 | \$321,244.88 | \$324,100.90 | | |
| DAM LOSSES | (\$393,735.19) | (\$370,261.27) | (\$486,020.79) | (\$522,546.33) | (\$555,298.40) | | |
| BALANCING ENERGY | (\$44,268.14) | (\$71,275.87) | (\$92,908.27) | (\$60,737.59) | (\$48,771.57) | | |
| BALANCING LOSSES | (\$6,421.66) | \$1,188.17 | (\$37,445.86) | \$2,501.95 | \$2,088.73 | | |
| BALANCING CONGESTION | \$59,470.19 | \$16,552.25 | \$6,458.71 | \$230,352.06 | \$28,922.91 | | |
| FINANCIAL IMPACT CHARGE | \$0.00 | \$0.00 | \$0.00 | \$0.00 | \$0.00 | | |



SETTLEMENTS REPORT
 June 2023 Settlement Adjustment
 July 10, 2023

Initial Settlement Adjustment – Market Residuals Analysis

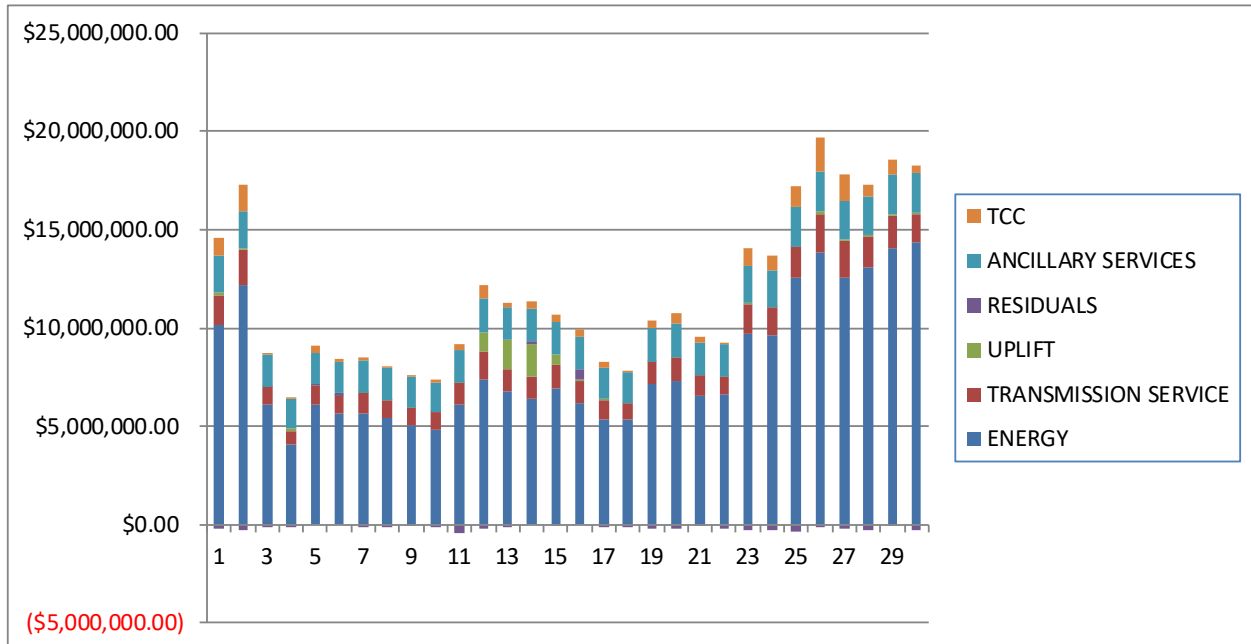
| | MONDAY | TUESDAY | WEDNESDAY | THURSDAY | FRIDAY | SATURDAY | SUNDAY |
|-------------------------|----------------|----------------|----------------|----------------|----------------|----------------|----------------|
| | | | | 1 | 2 | 3 | 4 |
| DAM ENERGY | | | | \$223,671.34 | \$280,738.72 | \$149,008.08 | \$100,492.83 |
| DAM LOSSES | | | | (\$371,924.30) | (\$492,351.82) | (\$270,922.27) | (\$176,115.43) |
| BALANCING ENERGY | | | | (\$93,666.83) | (\$137,025.09) | (\$26,266.57) | (\$15,650.80) |
| BALANCING LOSSES | | | | \$6,491.57 | \$12,817.65 | (\$7,406.87) | (\$7,651.16) |
| BALANCING CONGESTION | | | | \$14,221.69 | \$19,424.26 | (\$2,506.95) | (\$2,608.90) |
| FINANCIAL IMPACT CHARGE | | | | \$0.00 | \$0.00 | \$0.00 | \$0.00 |
| | 5 | 6 | 7 | 8 | 9 | 10 | 11 |
| DAM ENERGY | \$170,628.53 | \$169,172.77 | \$163,620.82 | \$137,556.83 | \$140,380.69 | \$130,345.94 | \$157,969.62 |
| DAM LOSSES | (\$276,253.46) | (\$273,158.55) | (\$276,833.21) | (\$236,661.63) | (\$244,685.97) | (\$243,515.40) | (\$279,902.68) |
| BALANCING ENERGY | (\$41,161.09) | (\$39,673.86) | (\$46,542.01) | (\$35,564.06) | (\$27,960.99) | (\$14,988.88) | (\$85,438.66) |
| BALANCING LOSSES | \$353.83 | \$306.63 | \$559.08 | \$5,037.62 | \$1,379.81 | (\$7,690.10) | \$7,826.32 |
| BALANCING CONGESTION | \$192,940.42 | \$266,777.53 | \$327.65 | (\$460.77) | \$67,258.88 | \$1,626.93 | (\$14,006.42) |
| FINANCIAL IMPACT CHARGE | \$0.00 | \$0.00 | \$0.00 | \$0.00 | \$0.00 | \$0.00 | \$0.00 |
| | 12 | 13 | 14 | 15 | 16 | 17 | 18 |
| DAM ENERGY | \$164,903.94 | \$176,637.31 | \$172,915.24 | \$189,978.24 | \$190,902.25 | \$133,536.91 | \$130,755.71 |
| DAM LOSSES | (\$273,569.23) | (\$295,864.23) | (\$293,899.13) | (\$331,670.03) | (\$332,513.39) | (\$234,100.78) | (\$247,251.22) |
| BALANCING ENERGY | (\$64,430.89) | (\$31,529.23) | (\$41,607.66) | (\$42,319.40) | (\$67,154.11) | (\$41,311.32) | (\$19,398.34) |
| BALANCING LOSSES | (\$9,314.81) | (\$6,996.38) | \$8,147.62 | \$4,818.80 | \$28,431.13 | \$5,233.96 | \$3,093.24 |
| BALANCING CONGESTION | (\$37,769.71) | \$10,194.26 | \$308,732.64 | \$153,296.03 | \$611,004.79 | (\$657.55) | (\$2,401.26) |
| FINANCIAL IMPACT CHARGE | \$0.00 | \$0.00 | \$0.00 | \$0.00 | \$0.00 | \$0.00 | \$0.00 |
| | 19 | 20 | 21 | 22 | 23 | 24 | 25 |
| DAM ENERGY | \$202,494.14 | \$198,740.37 | \$174,586.94 | \$157,896.24 | \$197,148.39 | \$187,231.95 | \$228,906.40 |
| DAM LOSSES | (\$364,621.92) | (\$337,140.59) | (\$281,658.84) | (\$272,937.17) | (\$326,335.20) | (\$332,525.67) | (\$409,821.38) |
| BALANCING ENERGY | (\$52,482.10) | (\$51,756.40) | (\$46,144.61) | (\$29,955.74) | (\$49,360.99) | (\$44,313.41) | (\$30,017.57) |
| BALANCING LOSSES | \$5,937.76 | \$3,515.37 | \$4,215.85 | (\$6,238.69) | (\$2,066.14) | (\$4,879.98) | \$1,414.37 |
| BALANCING CONGESTION | (\$4,762.90) | (\$33,658.59) | \$23,039.19 | (\$20,874.94) | (\$70,452.20) | (\$101,191.22) | (\$154,581.23) |
| FINANCIAL IMPACT CHARGE | \$0.00 | \$0.00 | \$0.00 | \$0.00 | \$0.00 | \$0.00 | \$0.00 |
| | 26 | 27 | 28 | 29 | 30 | | |
| DAM ENERGY | \$235,840.17 | \$245,171.05 | \$314,267.86 | \$321,244.89 | \$324,100.90 | | |
| DAM LOSSES | (\$393,735.19) | (\$370,261.26) | (\$486,020.79) | (\$522,546.33) | (\$555,298.41) | | |
| BALANCING ENERGY | (\$44,268.14) | (\$71,276.44) | (\$92,908.20) | (\$58,364.19) | (\$44,913.80) | | |
| BALANCING LOSSES | (\$6,421.66) | \$1,188.86 | (\$37,445.86) | \$2,643.22 | \$2,283.17 | | |
| BALANCING CONGESTION | \$59,470.19 | \$16,552.46 | \$6,458.72 | \$230,264.99 | \$28,984.64 | | |
| FINANCIAL IMPACT CHARGE | \$0.00 | \$0.00 | \$0.00 | \$0.00 | \$0.00 | | |



SETTLEMENTS REPORT
 June 2023 Settlement Adjustment
 July 10, 2023

Weekly Settlement – Market Costs Analysis

| | MONDAY | TUESDAY | WEDNESDAY | THURSDAY | FRIDAY | SATURDAY | SUNDAY |
|----------------------|-----------------|-----------------|-----------------|-----------------|-----------------|----------------|-----------------|
| | | | | 1 | 2 | 3 | 4 |
| ENERGY | | | | \$10,168,508.02 | \$12,177,302.87 | \$6,125,884.68 | \$4,042,310.89 |
| TRANSMISSION SERVICE | | | | \$1,509,607.13 | \$1,779,883.39 | \$859,972.54 | \$702,482.67 |
| UPLIFT | | | | \$99,174.81 | \$105,739.72 | \$28,919.55 | \$118,904.36 |
| RESIDUALS | | | | (\$221,461.25) | (\$281,200.66) | (\$158,272.10) | (\$101,693.38) |
| ANCILLARY SERVICES | | | | \$1,922,097.30 | \$1,890,947.72 | \$1,602,237.00 | \$1,513,604.80 |
| TCC | | | | \$909,870.14 | \$1,345,192.34 | \$63,517.78 | \$59,803.63 |
| | 5 | 6 | 7 | 8 | 9 | 10 | 11 |
| ENERGY | \$6,088,978.49 | \$5,638,251.41 | \$5,680,548.24 | \$5,409,094.60 | \$5,038,599.19 | \$4,796,766.38 | \$6,070,930.61 |
| TRANSMISSION SERVICE | \$972,899.19 | \$919,908.42 | \$1,050,893.46 | \$931,993.45 | \$909,064.15 | \$901,412.25 | \$1,120,570.26 |
| UPLIFT | \$46,902.76 | \$19,273.82 | \$5,774.00 | \$6,675.28 | \$4,603.03 | \$2,638.04 | \$43,054.38 |
| RESIDUALS | \$46,326.71 | \$123,275.53 | (\$159,014.91) | (\$130,212.22) | (\$63,713.96) | (\$134,791.80) | (\$406,522.61) |
| ANCILLARY SERVICES | \$1,598,094.39 | \$1,595,542.95 | \$1,591,206.16 | \$1,591,976.43 | \$1,583,042.82 | \$1,541,098.39 | \$1,617,684.78 |
| TCC | \$316,790.96 | \$118,645.29 | \$163,369.43 | \$67,954.32 | \$46,775.12 | \$148,161.87 | \$321,102.50 |
| | 12 | 13 | 14 | 15 | 16 | 17 | 18 |
| ENERGY | \$7,386,524.19 | \$6,800,123.14 | \$6,416,821.72 | \$6,931,766.18 | \$6,183,905.41 | \$5,367,025.37 | \$5,343,806.12 |
| TRANSMISSION SERVICE | \$1,437,448.59 | \$1,116,590.27 | \$1,124,613.69 | \$1,208,419.13 | \$1,132,012.21 | \$978,271.76 | \$834,522.68 |
| UPLIFT | \$930,971.85 | \$1,466,601.22 | \$1,640,106.21 | \$478,147.66 | \$56,035.18 | \$26,912.02 | \$30,611.05 |
| RESIDUALS | (\$219,040.48) | (\$147,849.49) | \$153,377.38 | (\$26,888.54) | \$517,690.89 | (\$137,944.64) | (\$135,274.32) |
| ANCILLARY SERVICES | \$1,762,011.68 | \$1,659,530.68 | \$1,639,539.76 | \$1,671,673.85 | \$1,649,422.98 | \$1,583,544.04 | \$1,573,497.33 |
| TCC | \$621,741.64 | \$210,630.83 | \$363,162.63 | \$418,883.93 | \$406,164.84 | \$287,513.78 | \$42,203.63 |
| | 19 | 20 | 21 | 22 | 23 | 24 | 25 |
| ENERGY | \$7,132,433.57 | \$7,314,873.72 | \$6,538,562.67 | \$6,636,587.04 | \$9,719,131.84 | \$9,636,214.46 | \$12,539,813.26 |
| TRANSMISSION SERVICE | \$1,111,108.55 | \$1,186,708.53 | \$1,025,159.06 | \$887,932.02 | \$1,496,290.74 | \$1,378,801.00 | \$1,556,610.20 |
| UPLIFT | \$14,230.13 | \$35,122.79 | \$28,674.92 | \$13,963.64 | \$29,489.95 | \$25,968.55 | \$64,054.73 |
| RESIDUALS | (\$213,715.86) | (\$220,252.15) | (\$52,725.83) | (\$172,329.83) | (\$251,260.43) | (\$295,678.33) | (\$364,099.41) |
| ANCILLARY SERVICES | \$1,710,204.72 | \$1,697,659.39 | \$1,647,062.55 | \$1,628,243.32 | \$1,909,892.39 | \$1,875,017.96 | \$2,000,924.32 |
| TCC | \$396,257.49 | \$493,518.51 | \$323,977.32 | \$23,665.35 | \$885,652.62 | \$744,403.90 | \$1,055,172.45 |
| | 26 | 27 | 28 | 29 | 30 | | |
| ENERGY | \$13,839,080.55 | \$12,557,047.49 | \$13,070,576.90 | \$14,084,571.11 | \$14,342,773.11 | | |
| TRANSMISSION SERVICE | \$1,957,682.91 | \$1,876,922.67 | \$1,593,596.90 | \$1,622,027.01 | \$1,428,012.07 | | |
| UPLIFT | \$95,932.21 | \$47,096.46 | \$54,592.31 | \$31,170.23 | \$63,475.94 | | |
| RESIDUALS | (\$149,114.63) | (\$178,625.67) | (\$295,648.35) | (\$29,185.03) | (\$248,957.43) | | |
| ANCILLARY SERVICES | \$2,034,998.01 | \$1,943,254.60 | \$1,932,040.37 | \$2,043,012.64 | \$2,030,440.03 | | |
| TCC | \$1,713,463.53 | \$1,354,135.03 | \$597,455.40 | \$783,780.89 | \$385,807.68 | | |



SETTLEMENTS REPORT
 June 2023 Settlement Adjustment
 July 10, 2023

Initial Settlement Adjustment – Market Costs Analysis

| | MONDAY | TUESDAY | WEDNESDAY | THURSDAY | FRIDAY | SATURDAY | SUNDAY |
|----------------------|-----------------|-----------------|-----------------|-----------------|-----------------|----------------|-----------------|
| | | | | 1 | 2 | 3 | 4 |
| ENERGY | | | | \$10,170,841.17 | \$12,179,874.90 | \$6,139,747.08 | \$4,042,249.90 |
| TRANSMISSION SERVICE | | | | \$1,509,744.94 | \$1,779,836.32 | \$861,063.82 | \$702,475.87 |
| UPLIFT | | | | \$99,174.81 | \$105,739.77 | \$28,919.56 | \$118,904.36 |
| RESIDUALS | | | | (\$221,206.53) | (\$316,396.28) | (\$158,094.58) | (\$101,533.46) |
| ANCILLARY SERVICES | | | | \$1,922,229.05 | \$1,890,636.59 | \$1,603,280.35 | \$1,513,598.32 |
| TCC | | | | \$920,737.29 | \$1,320,857.05 | \$63,517.78 | \$59,803.63 |
| | 5 | 6 | 7 | 8 | 9 | 10 | 11 |
| ENERGY | \$6,088,883.98 | \$5,638,223.27 | \$5,680,537.99 | \$5,409,089.70 | \$5,035,915.17 | \$4,796,310.39 | \$6,052,251.51 |
| TRANSMISSION SERVICE | \$972,891.79 | \$919,905.68 | \$1,050,892.25 | \$931,994.69 | \$908,860.45 | \$901,406.37 | \$1,138,171.90 |
| UPLIFT | \$46,902.77 | \$19,273.82 | \$5,774.00 | \$6,675.28 | \$4,603.03 | \$2,638.04 | \$45,947.96 |
| RESIDUALS | \$46,508.23 | \$123,424.52 | (\$158,867.67) | (\$130,092.01) | (\$63,627.58) | (\$134,221.51) | (\$213,551.82) |
| ANCILLARY SERVICES | \$1,598,086.95 | \$1,595,540.34 | \$1,591,205.02 | \$1,591,977.63 | \$1,582,847.06 | \$1,541,092.85 | \$1,624,492.10 |
| TCC | \$316,790.96 | \$118,645.29 | \$163,369.43 | \$67,954.32 | \$46,775.12 | \$148,161.87 | \$321,102.50 |
| | 12 | 13 | 14 | 15 | 16 | 17 | 18 |
| ENERGY | \$7,387,790.33 | \$6,799,836.70 | \$6,415,978.53 | \$6,930,773.98 | \$6,269,245.72 | \$5,366,386.02 | \$5,343,735.64 |
| TRANSMISSION SERVICE | \$1,437,453.76 | \$1,116,568.73 | \$1,124,548.37 | \$1,208,345.56 | \$1,137,220.77 | \$978,214.70 | \$834,515.05 |
| UPLIFT | \$930,971.85 | \$1,466,601.22 | \$1,640,106.20 | \$478,147.68 | \$53,456.54 | \$26,912.03 | \$30,611.05 |
| RESIDUALS | (\$220,180.70) | (\$147,558.27) | \$154,288.71 | (\$25,896.36) | \$430,670.67 | (\$137,298.78) | (\$135,201.87) |
| ANCILLARY SERVICES | \$1,762,016.36 | \$1,659,510.11 | \$1,639,477.32 | \$1,671,604.12 | \$1,653,356.32 | \$1,583,489.49 | \$1,573,488.00 |
| TCC | \$621,741.64 | \$210,630.83 | \$363,162.63 | \$418,883.93 | \$406,164.84 | \$287,513.78 | \$42,203.63 |
| | 19 | 20 | 21 | 22 | 23 | 24 | 25 |
| ENERGY | \$7,132,433.03 | \$7,314,900.44 | \$6,611,903.29 | \$6,636,419.23 | \$9,717,620.31 | \$9,636,214.46 | \$12,539,813.26 |
| TRANSMISSION SERVICE | \$1,111,105.69 | \$1,186,710.62 | \$1,030,397.54 | \$887,921.88 | \$1,496,209.59 | \$1,378,801.00 | \$1,556,610.20 |
| UPLIFT | \$14,230.13 | \$35,122.79 | \$28,674.91 | \$13,963.64 | \$29,489.95 | \$25,968.55 | \$64,054.73 |
| RESIDUALS | (\$213,435.02) | (\$220,299.84) | (\$125,961.47) | (\$172,110.30) | (\$251,066.14) | (\$295,678.33) | (\$364,099.41) |
| ANCILLARY SERVICES | \$1,710,201.97 | \$1,697,660.73 | \$1,651,052.95 | \$1,628,233.62 | \$1,909,814.37 | \$1,875,017.96 | \$2,000,924.32 |
| TCC | \$396,257.49 | \$493,518.51 | \$323,977.32 | \$23,665.35 | \$885,652.62 | \$744,403.90 | \$1,055,172.45 |
| | 26 | 27 | 28 | 29 | 30 | | |
| ENERGY | \$13,839,080.55 | \$12,557,143.87 | \$13,070,576.75 | \$14,082,233.67 | \$14,339,597.49 | | |
| TRANSMISSION SERVICE | \$1,957,682.91 | \$1,876,927.92 | \$1,593,596.90 | \$1,621,914.25 | \$1,427,845.66 | | |
| UPLIFT | \$95,932.21 | \$47,097.05 | \$54,592.31 | \$31,170.22 | \$63,475.94 | | |
| RESIDUALS | (\$149,114.63) | (\$178,625.33) | (\$295,648.27) | (\$26,757.42) | (\$244,843.50) | | |
| ANCILLARY SERVICES | \$2,034,998.01 | \$1,943,392.45 | \$1,932,146.46 | \$2,043,054.12 | \$2,030,597.51 | | |
| TCC | \$1,713,463.53 | \$1,354,135.03 | \$597,455.40 | \$783,780.89 | \$385,807.68 | | |

